

KBOS RNAV VISUAL Rwy 33L

Point Of Contact

ATC Facility Name -

POC's Name - Joe DeVito

Telephone Number - [REDACTED]

FAX Number - 718-709-2280

Email Address - joseph.devito@jetblue.com

TARGETS Distribution Package

KBOS RNAV VISUAL Rwy 33L

Leg Table 1

Segment	Leg Type	Start	End	Turn Type	Glide Path End Alt	Min Obs./ ATC End Alt	Max End Alt	Turn Radius Comp Alt	Descent Grad	Climb Grad	End Spd	Turn Radius Comp Spd	RNP	Turn Dir
Initial 2	IF	MISTK [AVNIS]	MISTK [AVNIS]	FB	6132			6131.56	0.0			250.0	1.0	
Initial 2	TF	MISTK [AVNIS]	REVER [AVNIS]	FB	5392			5392.36				250.0	1.0	LEFT
Initial 2	TF	REVER [AVNIS]	HURBE [AVNIS]	FB	4140			4140.49				250.0	1.0	RIGHT
Initial 2	TF	HURBE [AVNIS]	CLAWW [AVNIS]	FB	3000			3000.49				250.0	1.0	RIGHT
Initial 2	TF	CLAWW [AVNIS]	YAWKE	FB	2009			2009.04				250.0	1.0	RIGHT
Initial 3	IF	MYNOT [AVNIS]	MYNOT [AVNIS]	FB	3385			3385.30	0.0			250.0	1.0	
Initial 3	TF	MYNOT [AVNIS]	YAWKE	FB	2009			2009.04				250.0	1.0	LEFT
Intermediate	TF	YAWKE	WORRN [AVNIS]	FB	1009			1009.24				165.0	1.0	RIGHT
Final	TF	WORRN [AVNIS]	KBOS:RW33L:AER	FB	70			69.80				165.0	0.3	

Leg Table 2

Segment	Leg Type	Start	End	Turn Type	Leg Length (NMI)	Leg Length (FT)	Start Course Magnetic	End Course Magnetic	Course Change	RF/Flyby Leg Radius	RF/Flyby Turn Bank Angle	Tailwind	RF Leg Arc Center
Initial 2	IF	MISTK [AVNIS]	MISTK [AVNIS]	FB	0.00	0.00000							
Initial 2	TF	MISTK [AVNIS]	REVER [AVNIS]	FB	2.96	17965.73083	116.03	116.07	23.78	7.81	11.89	57.68	
Initial 2	TF	REVER [AVNIS]	HURBE [AVNIS]	FB	5.01	30426.08270	92.25	92.32	81.57	3.36	25.00	55.20	
Initial 2	TF	HURBE [AVNIS]	CLAWW [AVNIS]	FB	4.56	27707.03391	173.82	173.85	51.35	3.22	25.00	52.94	
Initial 2	TF	CLAWW [AVNIS]	YAWKE	FB	3.97	24096.78072	225.17	225.14	49.75	2.72	24.87	30.00	
Initial 3	IF	MYNOT [AVNIS]	MYNOT [AVNIS]	FB	0.00	0.00000							
Initial 3	TF	MYNOT [AVNIS]	YAWKE	FB	5.51	33449.42447	316.92	316.84	42.00	3.29	21.00	30.00	
Intermediate	TF	YAWKE	WORRN [AVNIS]	FB	4.00	24299.51083	274.92	274.86	56.27	1.27	25.00	30.00	
Final	TF	WORRN [AVNIS]	KBOS:RW33L:AER	FB	2.95	17925.14927	331.19	331.16					

KBOS RNAV VISUAL Rwy 33L

Waypoint Data

DB	Waypoint	Latitude (Deg)	Longitude (Deg)	Latitude (Deg, Decimal Min)	Longitude (Deg, Decimal Min)	Latitude (D° M' S.ss")	Longitude (D° M' S.ss")
AVNIS	CLAWW	N 42.3903528	W 70.8132417	N42 23.421	W70 48.795	N42 23 25.27	W070 48 47.67
AVNIS	HURBE	N 42.4607611	W 70.8519556	N42 27.646	W70 51.117	N42 27 38.74	W070 51 07.04
AVNIS	MISTK	N 42.4495694	W 71.0270139	N42 26.974	W71 1.621	N42 26 58.45	W071 01 37.25
AVNIS	MYNOT	N 42.2855028	W 70.7505528	N42 17.130	W70 45.033	N42 17 07.81	W070 45 01.99
AVNIS	REVER	N 42.4409667	W 70.9614750	N42 26.458	W70 57.689	N42 26 27.48	W070 57 41.31
AVNIS	WORRN	N 42.3197639	W 70.9448528	N42 19.186	W70 56.691	N42 19 11.15	W070 56 41.47
	YAWKE WP	N 42.3326111	W 70.8566806	N42 19.957	W70 51.401	N42 19 57.40	W070 51 24.05

PFAF

	LAT	LON
LTP/FTP	N42 21 16.74	W070 59 29.71
Runway True Bearing	315.18	
FAF Altitude	1009.24	
LTP/FTP Elevation	14.80	
TCH	55.00	
Glidepath Angle	3.00	
GPI	1049.46	
FAF Distance From LTP/FTP	17925.15 Feet	
	2.95 NM	
	LAT	LON
PFAF	N42 19 11.15	W070 56 41.47

KBOS RNAV VISUAL Rwy 33L

Vertical Error Budget

RNP Value	0.30
LTP MSL Elevation	14.80
Distance (ft) LTP to PFAF	17925.15
MSL PFAF Altitude	1009.24
Glidepath Angle	3.00
TCH	55.00
Delta ISA (dISA)	0.00
Semispan	131.00

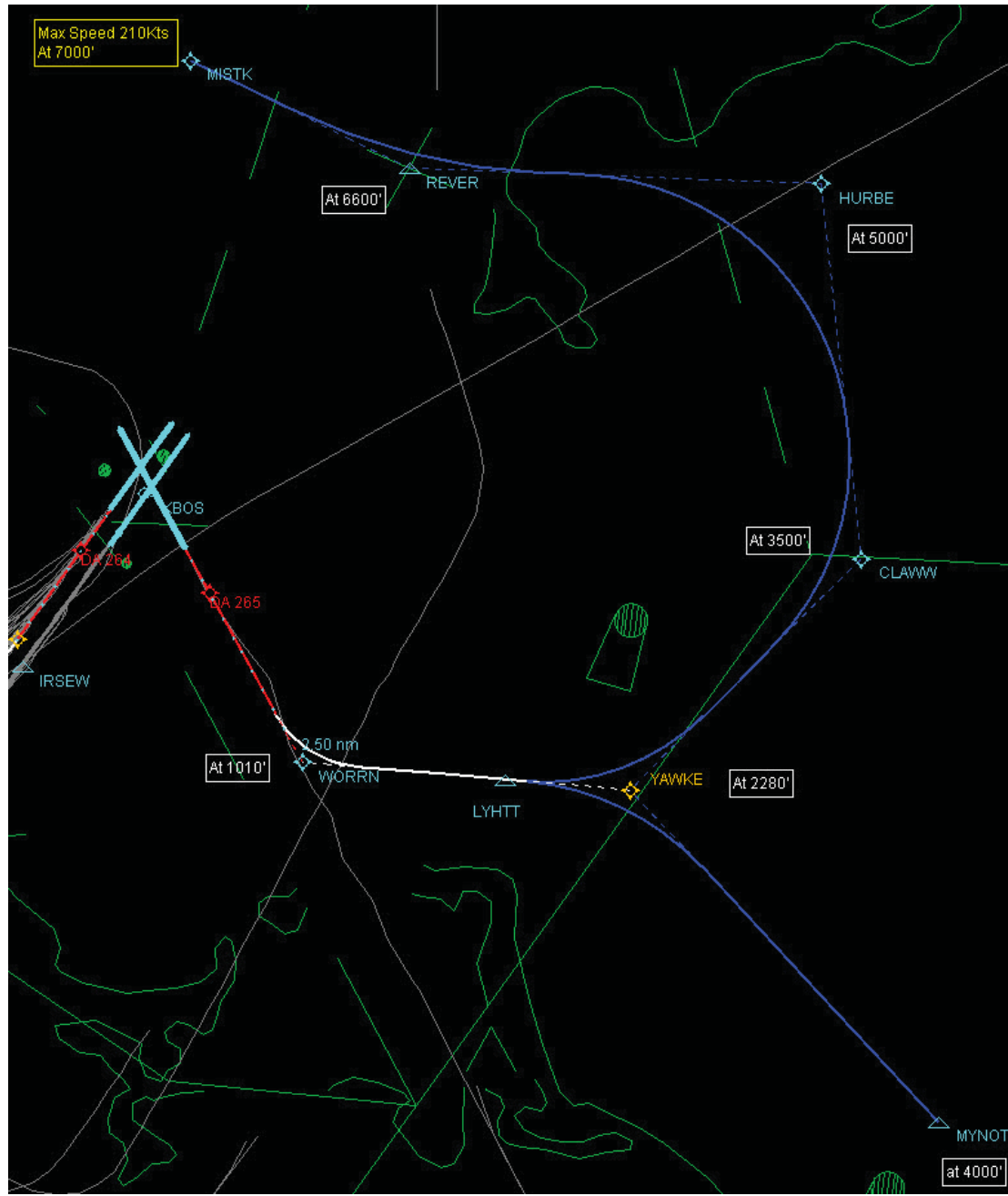
Max Glidepath Angle	3.50
PFAF Elevation	1009.24
LTP Elevation	14.8
ACT	0.00

Min Glidepath Angle	3.11	
NA Below	14.97 (C)	58.95 (F)
NA Above	47.57 (C)	117.63 (F)

Dist (ft) LTP to OCS ORIGIN	3234.20
OCS Slope (run:rise)	19.14:1
VEB ROC @ PFAF	221.75

<i>Error Components</i>	(Enter Bank Angle, WPR, FTE, and ATIS values below)	@ 250 ft	@ PFAF
ISAD	$(dh \times dISA)/288 + dISA - 0.5 \times .00198 \times [dh+h]$	0.00	0.00
BG	25.00 semispan x sin (Bank Angle)	25.00	25.00
ANPE	$1.225 \times rnp \times \tan(a)$	117.03	117.03
VAE	$D \times (\tan(a) - \tan(a - .01))$ D=250/tan(a)	0.83	3.32
WPR	60.00 WPR x tan(a)	3.14	3.14
FTE	75.00	75.00	75.00
ASE	$-8.8 \times 10^{-8} \times (h + D \times \tan(a))^2 + 6.5 \times 10^{-3} \times (h + D \times \tan(a)) + 50$	51.72	56.47
ATIS	20.00	20.00	20.00

KBOS RNAV VISUAL Rwy 33L



KBOS RNAV VISUAL Rwy 33L

Notes:

DESIGNED IAW 8260.55

Altitudes shown are commensurate with a 3.00 degree descent path to runway.

Weather Requirements Visibility 5 Miles and Ceiling 3,000ft

CHARTS NOTES: 1. DME/DME/IRU or GPS required 2. Radar Required 3. FMS Glide Path 3.0 degrees 4. VGSI and RNAV GP not coincident

Max Speed at MISTK 210Kts

KBOS RNAV VISUAL Rwy 33L